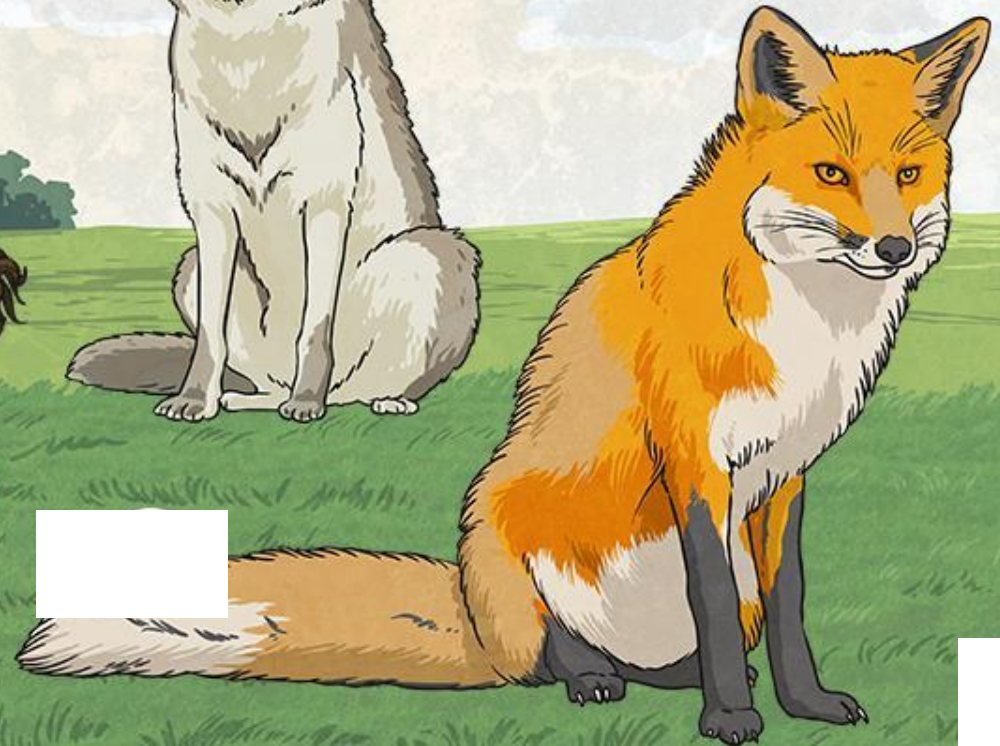
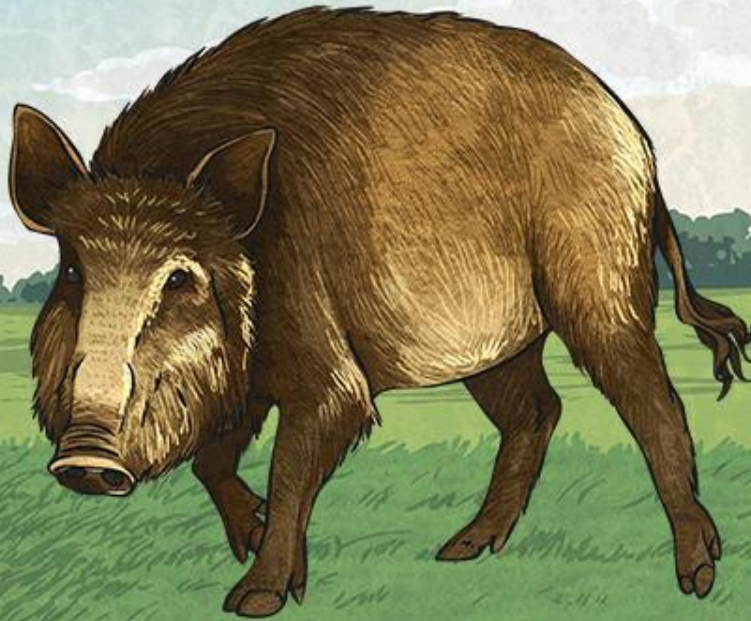


All About...

Grassland Habitats



What Is a Grassland?

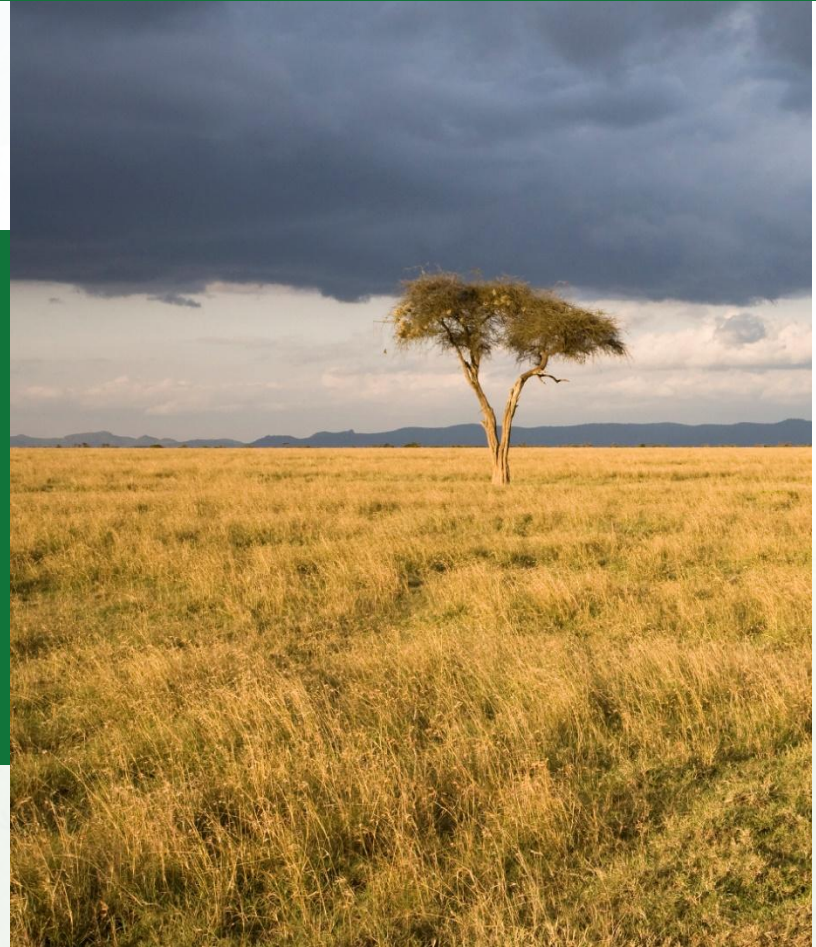
Grasslands are found across the world and are known by different names in different places: in the USA, they are called prairies; African grasslands are called savannahs; South Americans call them pampas; some parts of Europe and Asia call them steppes.



Types of Grassland

There are two main types of grasslands:

- **Tropical grasslands** – These grasslands have a wet and a dry season. The range of temperatures throughout the year is smaller than temperate grasslands. Savannas in Africa are examples of tropical grasslands.



Temperate Grasslands



Other plants that grow in temperate grasslands include sunflowers, clover and different kinds of herbs.

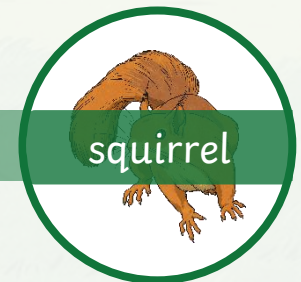


Temperate Grasslands

North American grasslands are home to animals such as buffalo, prairie dogs, coyotes and wolves.



Temperate grasslands in Europe and Asia are the habitats of foxes, wild boar, hedgehogs and squirrels.



Threats to Temperate Grasslands



Because the soil in temperate grasslands is fertile (good for growing crops), lots of it is used for farming. Pesticides used to remove insects that eat crops can be harmful to other living things.

Climate change causes huge differences in rainfall. Some grasslands could be destroyed by flooding and others by drought.

As cities and towns grow, more buildings are being placed on grasslands. This leads to a loss of habitat for plants and animals.



Tropical Grasslands



Plants growing in tropical grasslands are specially adapted to survive. Most of them have tap roots. This is when one long, thick root grows downwards and other small roots then branch off from it. The long root is able to reach water lying under the ground.

Trees growing in tropical grasslands have thick trunks to store water. They also have thick barks to protect themselves from animals. During the dry season, there are often fires in tropical grasslands. Thick barks protect trees from fire damage.



Tropical Grasslands

Some animals living in tropical grasslands are herbivores and eat the long grass that grows there. These include zebras (African grasslands), capybaras (South American grasslands) and wallabies (Australian grasslands).

Tropical grasslands are also the habitat of carnivores, who prey on (eat) the herbivores. The most well-known of these creatures are those found on African savannahs, such as lions, cheetahs and hyenas.



capybara



wallaby



REGENT STUDIES

Focused education on life's walk

www.regentstudies.com